



ON THE FLOOR

LATEST NEWS - NEW RELEASES - SPECIAL DEALS

FEBRUARY - APRIL 2020

FROM THE DESK:

Welcome to our first 2020 edition of On The Floor. Our sincere thanks for your ongoing and loyal support during what was a very positive 2019, made all the more rewarding with Gilt Edge turning 50. It's a proud achievement to reach the 50 year milestone in business and certainly not possible without a very loyal client base, longstanding and mutually beneficial supplier partnerships and a fantastic group of talented and committed employees.

2020 sees Gilt Edge expand with our recently opened Auckland Bulk Store Facility at 41 Fairfax Ave. Penrose, just one door down from our Trade Depot and in the same distinctive blue and gold colours. This will free up additional customer parking space at 37 Fairfax and ease congestion with containers being landed at the new bulk store. We are also undergoing an interior upgrade to our Glenfield, North Shore Trade Depot and increasing customer parking options.

2019 saw Gilt Edge open new trade depots in Palmerston North and Whangarei. Year one at both locations was very positive and we look forward to building on that momentum this year. This edition highlights more details on our new Floating Floor Trim Range. Speaking of trims, we are frequently asked for black powder coated naplocks. Yes we can supply these and yes they are a stock line for us so there are no lead times (see details on page 2).

Best regards
Chris Dickey,
Managing Director

DON'T FORGET OUR TENSOR GRIP X40 ACOUSTIC ADHESIVE GREEN AND CLEAR

Developed in conjunction with the acoustic industry for all acoustic panel bonding applications. Tensor Grip X40 Acoustic Adhesive is a fast-drying contact adhesive, suitable for all types of acoustic panel installation and applications including in-house and on-site bonding processes.

- Low VOC
- Excellent High Coverage of up to 230m² per 22ltr canister
- 80% of Final Strength achieved immediately upon bonding
- Open time allows for repositionability for panel alignment prior to bonding
- Full strength achieved in 24 hours, high strength long-term bond
- Fast, high tack (3-4) mins. Adheres well to most construction substrates
- Long open time 45-60 mins
- High (105°C) temperature heat resistant
- Low Odour
- Little overspray
- Fully Portable



Product code:
GGTGX40G-Green
GGTGX40C-Clear

Ask your Gilt Edge Sales Consultant for pricing.

ACCESSORIES AVAILABLE



CANISTER SPRAY GUN
Product code: GGPGSG



SPRAY HOSE
Product code:
3.6m GGPG3M
7.2m GGPG7M

MORE DOUBLE SIDED SCRIM TAPE OPTIONS



We've added 90 and 140mm wide options in addition to our popular 23mm width size for adhering 100 and 150mm Feather Edge and CBS Wall Covings .

- No contact adhesive fumes / site compliance issues
- No mess and no clean up hassles
- Faster installation advantages

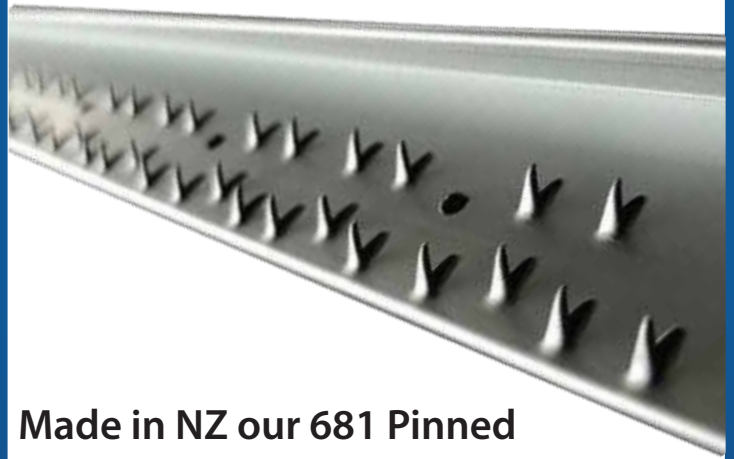
CODES:

GGDSST90 D/S Scrim Hi Tack 90mm x 50m rolls

GGDSST140 D/S Scrim Hi Tack 140mm x 50m rolls

**ENQUIRE
NOW**

NZ MADE BLACK NAPLOCKS



Made in NZ our 681 Pinned Naplock bars now have:

- Greater total catchment: 30% more pins
- Greater holding power: Wider pins
- Greater initial grab : Upright and sharper pin points.

**AVAILABLE IN BLACK
POWDER COATED FINISH**

COMMERCIAL PROJECT HIGHLIGHTS

Riverside Market - Christchurch

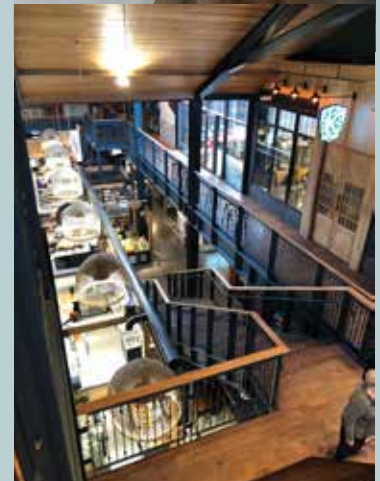
Area: 650m²

Contractor: Swinard Wooden Floors Ltd.

Challenge: Solid timber being installed over new concrete slab with numerous contractors working 24/7.

Solution: Swinard Wooden Floors used GEI new Green Force Timber Adhesive (now called Ultraset 3 in 1 – refer page 4) which is an adhesive and moisture barrier in one. By using a two in one system this meant no downtime waiting for the moisture barrier to dry and eliminated the concerns of potential contamination issues due to other trades. Swinard Wooden Floors then applied two coats Pallmann Magic Oil 2K Ergo and one coat Magic Oil Care. The finished result is not only stunning but also provides the wear surface Riverside Market required.

Result: With the help of Gilt Edge Industries Swinard Wooden Floors have completed another quality project.



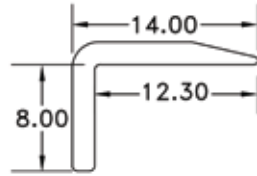
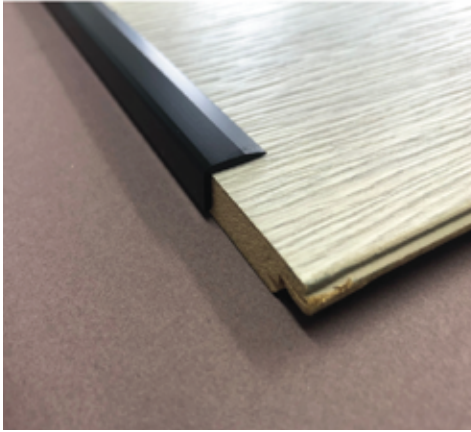
Another Commercial project completed utilizing the Gilt Edge Commercial team for advice and application details.

NEW FLOATING FLOOR RANGE OF TRIMS

Designed for use with Laminate and Engineered Timber Floors.
Available in Matt Silver, Matt Black and Champagne.

Trim length 2.5metre.

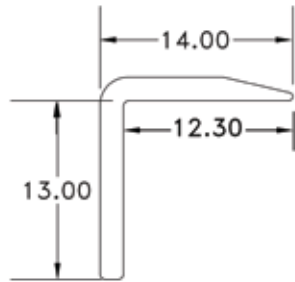
Timber Angle End 8mm & 13mm



SKU: 6104B8mm - Matt Black \$19.25

SKU: 6104C8mm - Champagne \$17.25

SKU: 6104S8mm - Matt Silver \$17.25

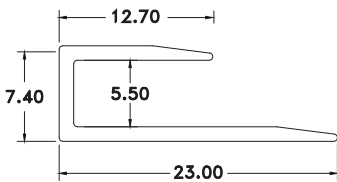


SKU: 6105B13mm - Matt Black \$19.25

SKU: 6105C13mm - Champagne \$17.25

SKU: 6105S13mm - Matt Silver \$17.25

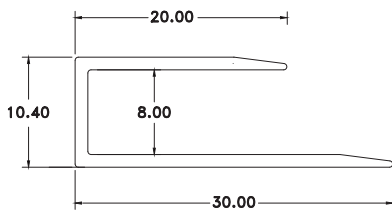
Floating Floor Box Edging 5.5mm, 8mm, 10mm & 15mm



SKU: 6100B5.5mm - Matt Black \$20.95

SKU: 6100C5.5mm - Champagne \$15.85

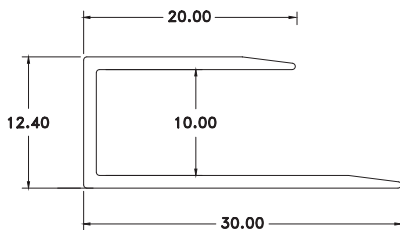
SKU: 6100S5.5mm - Matt Silver \$15.85



SKU: 6101B8mm - Matt Black \$20.95

SKU: 6101C8mm - Champagne \$15.85

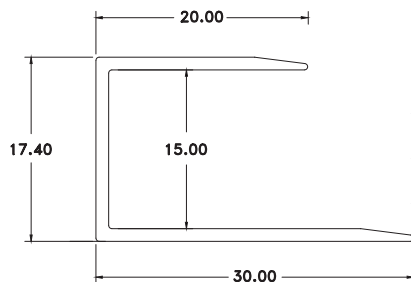
SKU: 6101S8mm - Matt Silver \$15.85



SKU: 6102B10mm - Matt Black \$20.95

SKU: 6102C10mm - Champagne \$15.85

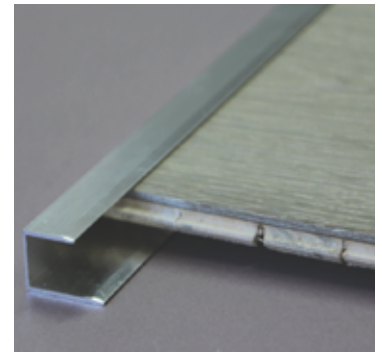
SKU: 6102S10mm - Matt Silver \$15.85



SKU: 6103B15mm - Matt Black \$24.95

SKU: 6103C15mm - Champagne \$19.95

SKU: 6103S15mm - Matt Silver \$19.95



All Prices Quoted Are GST Exclusive



axios™
TRI-LINKING™
TECHNOLOGY



ULTRASET SingleStep2 and Greenforce
are changing to one product...

ULTRASET 3 IN 1

HARDWOOD ADHESIVE



WHY?

- **ULTRASET 3 IN 1** is the same product as ULTRASET SingleStep 2, but with a more aligned and relevant name
- Greenforce (2 in 1 product) will **NO LONGER BE AVAILABLE**

THE GOOD NEWS:

- **ULTRASET 3 IN 1** pricing will be amended to the same pricing as Greenforce
- Greenforce customers will now enjoy the added benefit of acoustic properties, plus Thickness Control Spacer Technology at no additional cost.



All promotional pricing excludes GST and is nett of any further discounts. Some promotional items may have quantity limits.
No refunds or credits accepted on end of line stock clearances and promotional deals.

Auckland
37 Fairfax Avenue
Penrose
Ph 09 579 7067
Fax 09 579 7064

Auckland
3/7 Colway Place
Glenfield
Ph 09 443 7067
Fax 09 444 0510

Hamilton
10a Haig Street
Frankton
Ph 07 847 6452
Fax 07 847 6924

Tauranga
33 Burrows Street
Ph 07 571 8244
Fax 07 847 6924

Palmerston North
Unit A,
65 Taonui Street
Ph 06 825 6519
Fax 07 847 6924

Wellington
50 Fitzherbert Street
Petone
Ph 04 569 7067
Fax 04 569 7066

Christchurch
110 Antigua Street
Addington
Ph 03 379 7067
Fax 0800 103 649

Dunedin
15 Turakina Road
Ph 03 455 7067
Fax 03 455 7069

Nelson
8b Tokomaru Place
Ph 0274 387 266

TO ORDER EMAIL: help@giltedge.co.nz
or FREE PHONE: 0800 445 833
www.giltedge.co.nz



Every Flooring Installation Deserves the **"GILT EDGE"** Finish